

A 30 YEAR STORY IN PROMOTING SOCIAL VALUE THROUGH RE-USE

Anémone Berès – Chairman of the Board – Federation Envie

Rreuse Conference – European Economic and Social Committee – Brussels 20 April 2015

Envie purpose and mission

- Considering that... :
 - The current economic system creates inequality and excludes people
 - Our consumer society generates ever more waste
- ... *Envie* has developed over 30 years :
 - an organisation centered on the individual person
 - and committed to promote the circular economy.
- ***Envie* creates value in the social and environmental fields**
 - Solutions for a better employability
 - Through re-use and recycling of Weee



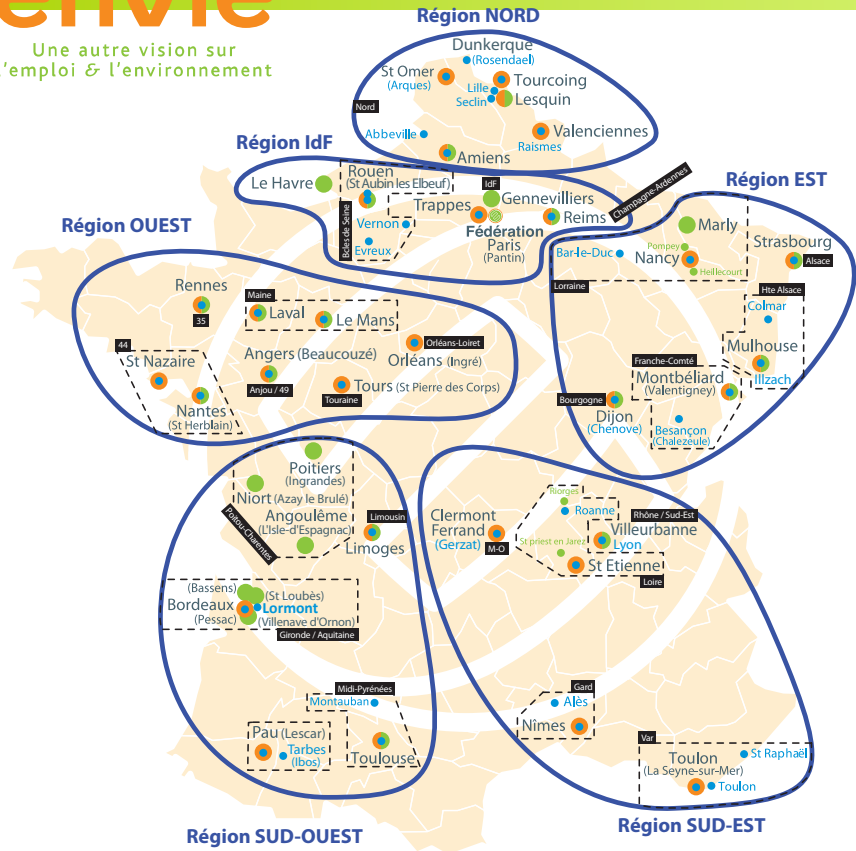
Key Facts and Figures

- 30 Workshops refurbishing and/or repairing for re-use 84,000 appliances every year
 - Sold in 46 stores
 - Generating revenues of 14M€ in 2014
 - French leader in the sale of Refurbished Equipment with Warranty
- 20 WEEE collecting and recycling Units :
 - 137 000 tons collected (2013)
 - 30% of French total WEEE tons collected
 - Treatment stream : 98 000 tons
- 2014 : the first French facility Weeelabex certified is an *Envie* site
 - Weeelabex : new european label of excellence for WEEE initiated by the WEEE Forum eco-organizations.
- A federation of all *Envie* entities :
based in Paris consisting in a team of 10 people dedicated to coordination, training, lobbying, quality control, development...





Une autre vision sur l'emploi & l'environnement



24 unités ERG :
 30 ateliers
 46 magasins
20 unités 2E :
 29 sites

Fédération :
www.envie.org



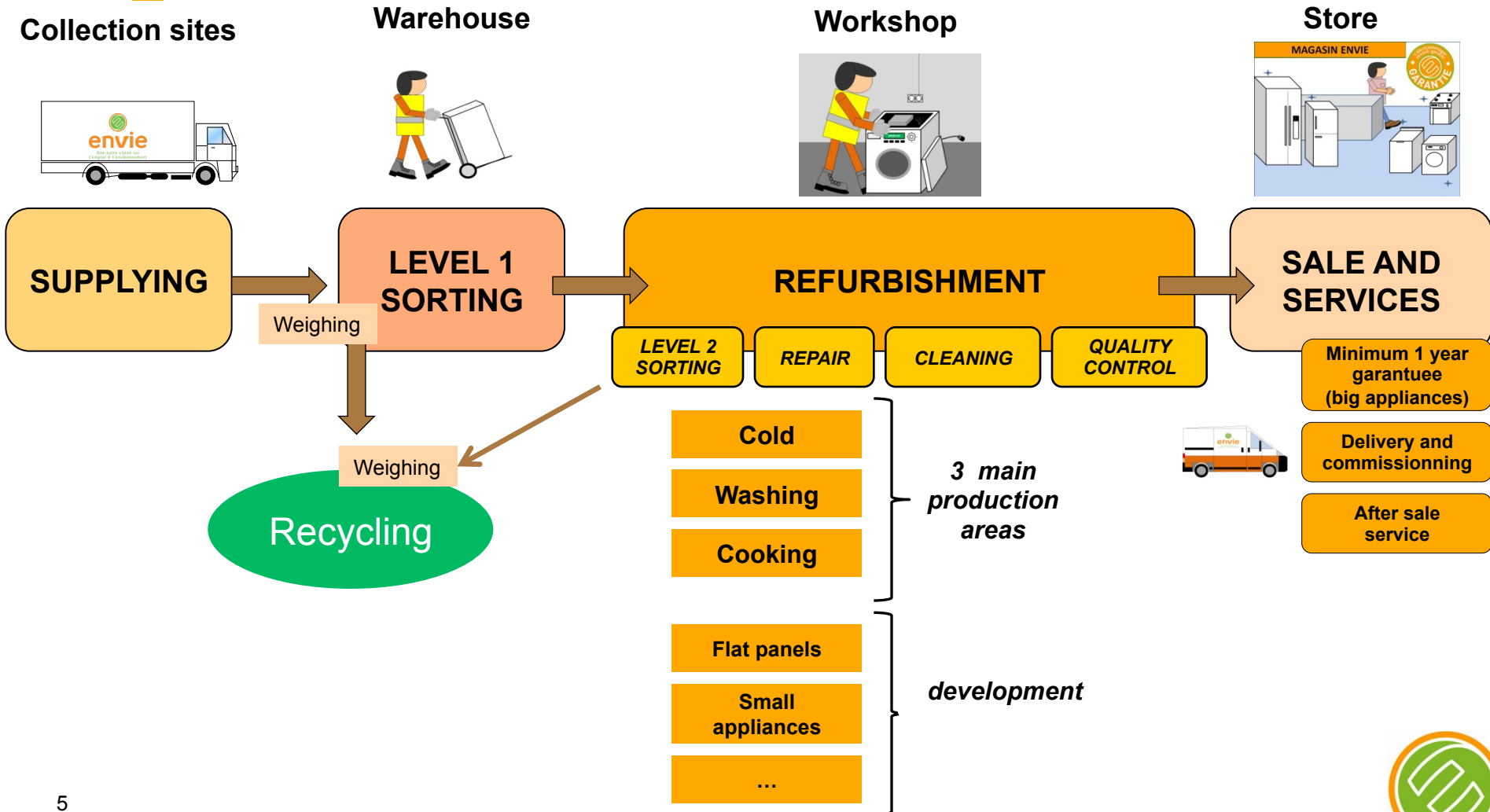
envie **envie**
L'électroménager rénové garanti Notre solution professionnelle pour l'homme et l'environnement

Magasins

- Entreprises de collecte et de recyclage des déchets électriques et électroniques
- Ateliers de rénovation d'appareils électroménagers
- Magasins de vente d'appareils électroménagers rénovés à petits prix et garantis 1 an
- Siège de la Fédération Envie



Organisation of an *Envie* Re-use Center



Re-use activity by *Envie* : what is the economic model ?

- *Envie* started resocializing individuals excluded from the labor market through a professional project based on WEEE re-use and recycling activities in 1984, long before the adoption of the EPR regulation.
- After the regulation was adopted, *Envie* entered into a partnership contract with the eco-organisation Eco-systèmes in order to continue to collect WEEE specifically for re-use matter on dedicated collecting sites.
- Eco-systèmes contributes financially to *Envie* re-use activities by paying :
 - a contribution to the cost of collecting and sorting
 - and a contribution per refurbished appliance sold.
- The majority of *Envie* revenue comes from the sales of Re-use appliances.
- The state contribution for each excluded person hired by *Envie* barely covers the extra cost of training and integration.



What about targets ?

- A target for re-use has been set some years ago between *Envie* and Eco-systèmes : refurbishing 15% of the appliances collected on our dedicated sites.
- The key factor to meeting this target is access to qualitative and quantitative WEEE sourcing.
- The economic trend towards massification of the collection of WEEE for recycling is a clear threat to the development of Re-use.
- Overall, *Envie* re-uses less than 0,5% of all WEEE collected in France : there is room for improvement and *Envie* is definitely **in favor of Re-use quantitative targets.**



How to better support Circular Economy : some taxation and standardisation issues

- Focus on the CENELEC project (preparing for re-use standards) : the position of producers should be balanced with that of re-use operators : among other re-use operators, *Envie* has a 30 years experience in re-using appliances sold with a one year warranty.
- Specifically, the proposal under discussion to restrict replacement components for repair with only original and OEM spare parts should be abandoned : what matter are the technical specifications of the component, **not who manufactured it !**
- A final key issue is taxation : sales of re-used appliances and repair services need to be encouraged with a **no VAT status**, or at least a lower VAT.



Contact information

Anémone BERES

Présidente

anemone.beres@envie.org

Marie-Hélène BAILLY

Déléguée générale


marie-helene.bailly@envie.org

Fédération ENVIE

32, rue Delizy - 93500 Pantin

Tél. : 01.48.13.90.00

www.envie.org

 @Envie_org

